

RAET1E Antibody(Center)
Affinity Purified Rabbit Polyclonal Antibody (Pab)
Catalog # AP19552c**Specification**

RAET1E Antibody(Center) - Product Information

Application	WB,E
Primary Accession	Q8TD07
Other Accession	NP_631904.1
Reactivity	Human
Host	Rabbit
Clonality	Polyclonal
Isotype	Rabbit IgG
Calculated MW	30122
Antigen Region	150-179

RAET1E Antibody(Center) - Additional Information**Gene ID** 135250**Other Names**

NKG2D ligand 4, N2DL-4, NKG2DL4, Lymphocyte effector toxicity activation ligand, RAE-1-like transcript 4, RL-4, Retinoic acid early transcript 1E, RAET1E, LETAL, N2DL4, ULBP4

Target/Specificity

This RAET1E antibody is generated from rabbits immunized with a KLH conjugated synthetic peptide between 150-179 amino acids from the Central region of human RAET1E.

Dilution

WB~~1:1000

E~~Use at an assay dependent concentration.

Format

Purified polyclonal antibody supplied in PBS with 0.09% (W/V) sodium azide. This antibody is purified through a protein A column, followed by peptide affinity purification.

Storage

Maintain refrigerated at 2-8°C for up to 2 weeks. For long term storage store at -20°C in small aliquots to prevent freeze-thaw cycles.

Precautions

RAET1E Antibody(Center) is for research use only and not for use in diagnostic or therapeutic procedures.

RAET1E Antibody(Center) - Protein Information**Name** RAET1E {ECO:0000303|PubMed:11827464, ECO:0000312|HGNC:HGNC:16793}

Function Binds and activates the KLRK1/NKG2D receptor, mediating natural killer cell cytotoxicity.

Cellular Location

Membrane; Single- pass type I membrane protein

Tissue Location

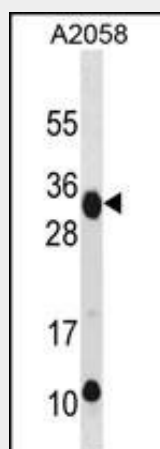
Predominantly expressed in the skin, but also expressed in testis and trachea. Up-regulated in tumor cells of different origins. Expression progressively decreased after treatment of tumor cells with retinoic acid.

RAET1E Antibody(Center) - Protocols

Provided below are standard protocols that you may find useful for product applications.

- [Western Blot](#)
- [Blocking Peptides](#)
- [Dot Blot](#)
- [Immunohistochemistry](#)
- [Immunofluorescence](#)
- [Immunoprecipitation](#)
- [Flow Cytometry](#)
- [Cell Culture](#)

RAET1E Antibody(Center) - Images



RAET1E Antibody (Center) (Cat. #AP19552c) western blot analysis in A2058 cell line lysates (35ug/lane). This demonstrates the RAET1E antibody detected the RAET1E protein (arrow).

RAET1E Antibody(Center) - Background

Members of the RAET1 family, such as RAET1E, are major histocompatibility complex (MHC) class I-related genes located within a 180-kb cluster on chromosome 6q24.2-q25.3. RAET1 proteins contain MHC class I-like alpha-1 and alpha-2 domains. RAET1E and RAET1G (MIM 609244) differ from the other RAET1 proteins (e.g., RAET1I, or ULBP1; MIM 605697) in that they have type I membrane-spanning sequences at their C termini rather than glycosylphosphatidylinositol anchor sequences. RAET1E is a ligand for NKG2D (KLRK1; MIM 611817), which is expressed on the surface of several types of immune cells and is involved in innate and

adaptive immune responses (summary by Radosavljevic et al. (2002) [PubMed 11827464] and Cao et al. (2007) [PubMed 17470428]).

RAET1E Antibody(Center) - References

McGilvray, R.W., et al. Int. J. Cancer 127(6):1412-1420(2010)
Antoun, A., et al. Hum. Immunol. 71(6):610-620(2010)
Davila, S., et al. Genes Immun. 11(3):232-238(2010)
Romphruk, A.V., et al. Immunogenetics 61(9):611-617(2009)
Kong, Y., et al. Blood 114(2):310-317(2009)